

FOOTINGS AND FLOOR SLABS:

Reinforced concrete or pre-cast concrete.

EXTERNAL WALLS:

Painted "West Wind Dust" with Custom Orb Wall cladding to match roof colour.

ROOFS: Colorbond finished metal deck.

WINDOWS:

Glazed in powder coated or anodized aluminium frames.

CARPARKING: 135 Bays (approx).

SWIMMING POOL AND SURROUND:

Concrete pool, brick/concrete paving and timber decking, outdoor furniture and shade sails.

LANDSCAPING:

All external areas to be fully landscaped with feature paving and decking, planting and automatic reticulation.

INTERNAL WALLS: Painted Bristol Low Sheen "Winter Day".

CEILINGS:

Interior ceilings painted Bristol Low Sheen "Winter Day" except the passage way with exposed ceilings. Eaves painted Bristol Low Sheen "Winter Day".

ENTRY DOORS:

Fire rated solid core doors with security hardware.

INTERNAL DOORS:

Painted timber flush panel and framed glazed doors.

SKIRTING

Dado skirting to bathrooms and showers. Painted Hardwood Skirting Board (Where Tiled) - Colour to match doors & door frame. Laminate Natural Brush kickboards on cabinets. Painted MDF Bullnose Skirting Board (Where Carpeted) - Colour to match doors & door frames.

FLOOR FINISHES:

Quality floor tiles to the entry, kitchen, living, and the bathroom. Quality non-slip tiles to balconies. Carpets as selected to the bedrooms and general living areas. Concrete finish to passage walkways.

WALL TILES:

White gloss tiles to Bathrooms and Ensuites. Silver coloured backing with direct glass splash back for Kitchen.

BUILT IN CUPBOARDS:

KITCHEN:

Caesar Stone "Iced Snow" bench tops with Hardform Maple Sugar Satin Stainless edging for cabinet and doors.

VANITIES:

Caesar Stone "Iced Snow" bench tops with Hardform Maple Sugarmatching Edge for cabinet and doors.

ROBES:

Mirrored brushed silver doors. White melamine interior.

PLUMBING:

HOT WATER:

Mains pressure electric or gas storage units.

BASINS:

Vitreous china vanity basin.

BATH: Acrylic corner spa bath (where shown).

TOILETS:

Caroma Royale toilet suite (or similar).

TAPWARE:

Chrome single flick mixer to sink and basin.

BATHROOM:

Chrome matching towel rails, toilet roll holders, soap dishes accessories and coat hooks.

MIRRORS:

Full width above vanities.

APPLIANCES:

REFRIGERATOR:

Silver Westinghouse (or similar).

COOK TOPS:

Black Westinghouse (or similar).

RANGE HOOD:

Stainless Steel Westinghouse (or similar).

MICROWAVE

Whirlpool (or similar) in silver.

DISHWASHER

Fisher & Paykel (or similar drawer type).

WASHING MACHINE

Simpson front load (or similar) in white.

DRYER

Simpson (or similar) in white.

LIGHT FITTINGS:

Surface and wall mounted lighting to general areas. Low voltage down lights to wet areas.

POWER POINTS:

LIVING ROOM:

2 of double.

KITCHEN:

2 of doubles and 2 off singles.

MASTER BEDROOM:

2 of doubles.

BEDROOM:

2 of doubles.

BATHROOM AND ENSUITE:

1 of double.

LAUNDRY RECESS:

1 of double (where applicable).

TELEPHONE:

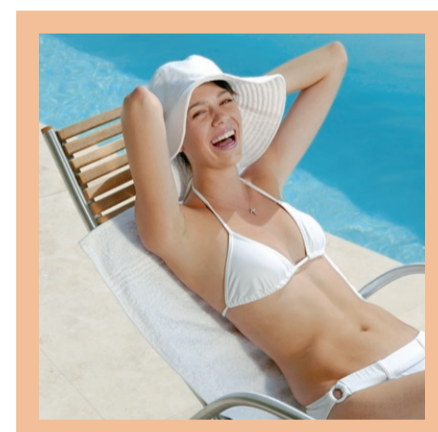
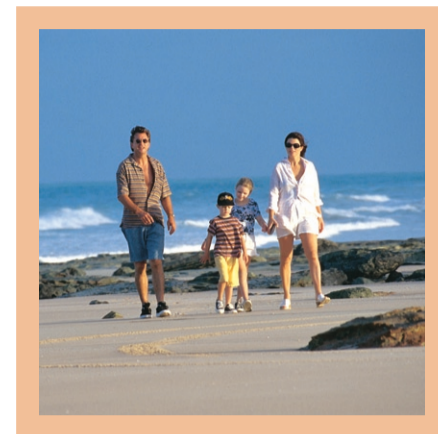
Pre-wired telephone points and internet connection.

TELEVISION:

Built in television points wired to common antenna.

AIR CONDITIONING:

Quality, cooling only remote control split system. Ceiling fans to bedrooms and living areas.



Indicative schedule of finishes only. Please refer to the contract of sale.